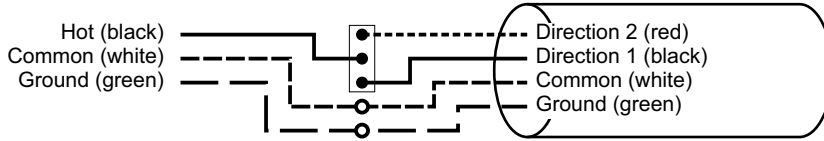


Rollshutter Motor-drive Wiring

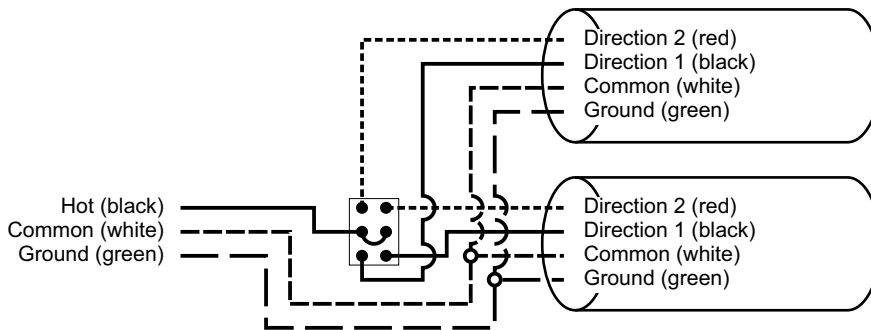
See Specific Job Information for Exact Specifications

Single Rollshutter



Use a single-pole double-throw switch to control a single rollshutter.

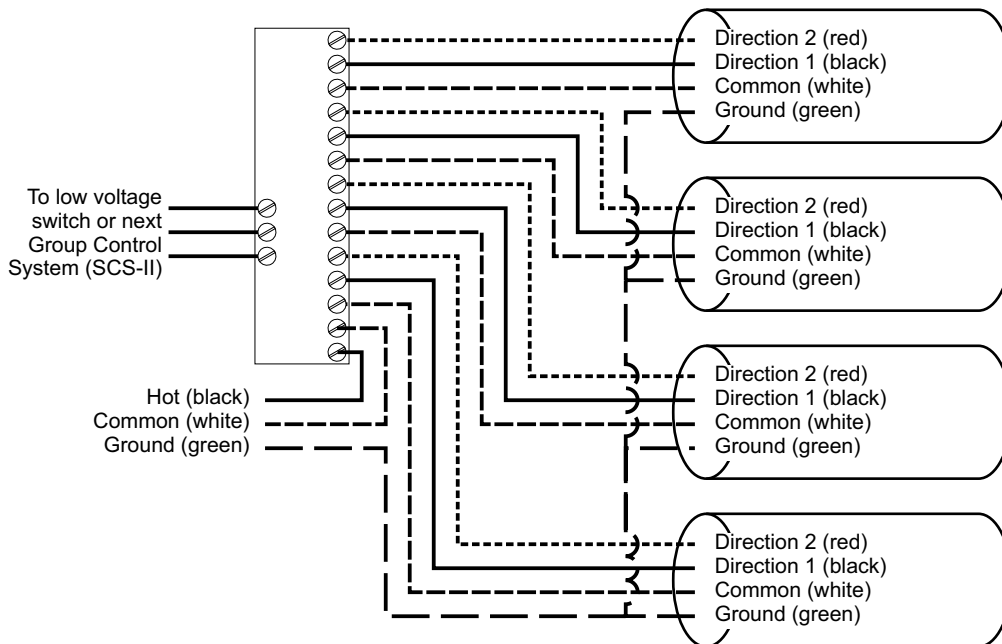
Two Rollshutters with DPDT Switch



A double-pole double-throw (DPDT) switch may be used to control two rollshutters.

Never use a DPDT switch to control more than two rollshutters.

Multiple Rollshutters with Group Control System (GCS-II)



The Group Control System is intended to control up to four motors from one switch location. Multiple GCSs may be wired together to increase the number of shutters controlled.

Never control two or more rollshutters with a single-pole switch!

